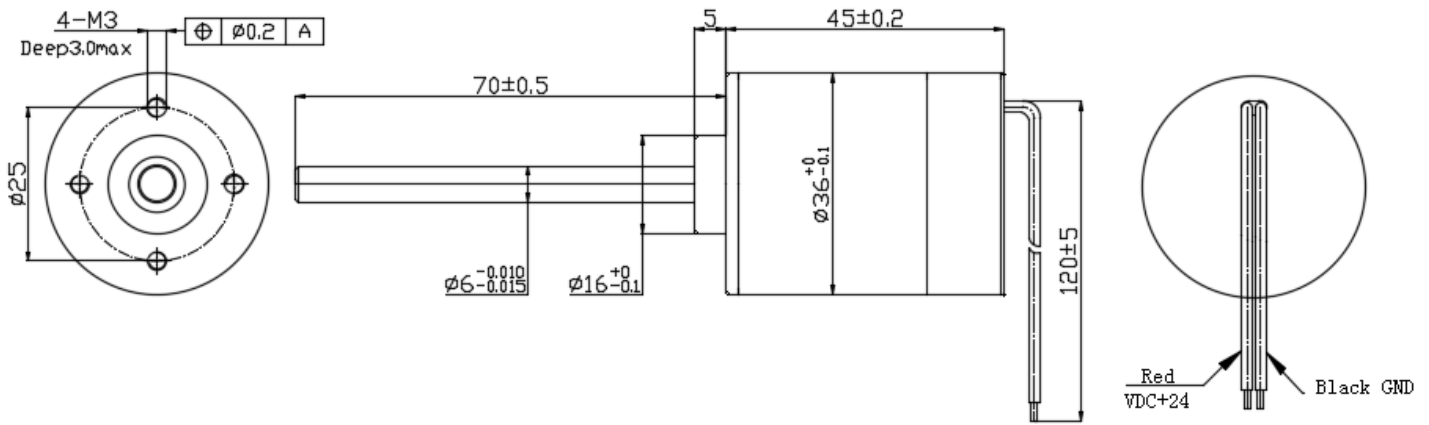


空心杯电枢绕组

Φ36*L45mm无刷电机Brushless DC motor

SINBAD EC motor

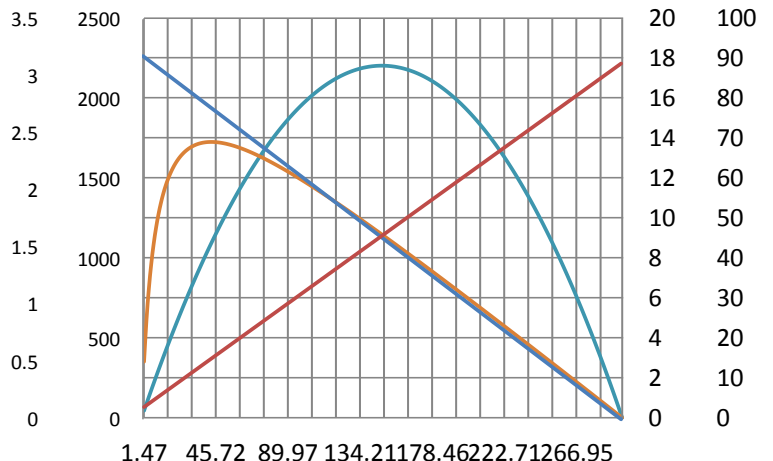


电机参数 Motor Datas			电机型号 Motor Model			
额定电压参数值 Value at rated voltage			XBD3645Q2			
			4015WG-0670			
额定点 Nominal	1 额定电压 Rat voltage	V/DC	24			
	2 额定转速 Nominal speed	rpm	1505			
	3 额定电流 Nominal current	A	1.1			
	4 额定转矩 Nominal torque	mNm	100.29			
空载点 Free Load	5 空载转速 No load speed	rpm	2280			
	6 空载电流 No load current	mA	89.0			
最大效率点 At Max. Efficiency	7 最大效率 Max. efficiency	%	69.0			
	8 转速 Speed	rpm	1881			
	9 电流 Current	mA	0.6			
	10 转矩 Torque	mNm	51.621			
最大输出功率点 At Max. Output	11 最大功率 Max. output	W	17.6			
	12 转速 Speed	rpm	1140			
	13 电流 Current	A	1.6			
	14 转矩 Torque	mNm	147.49			
堵转点 At Stall	15 堵转电流 Stall current	A	3.1			
	16 堵转转矩 Stall torque	mNm	294.98			
电机常数 Motor Constants						
	17 电机阻抗 Terminal resistance	Ω	7.72			
	18 电机感抗 Terminal inductance	mH	0.15			
	19 转矩常数 Torque constant	mNm/A	0.098			
	20 转速常数 Speed constant	rpm/V	95.0			
	21 转数/转矩常数 Speed/torque gradient	rpm/mNm	7.7			
	22 机械时间常数 Mechanical time constant	ms	0.0			
	23 转子惯量 Rotor inertia	gcm ²	26.0			
电机特性曲线 (Motor Characteristics)						
	24 极对数 Number of pole pairs	1	3.5	2500	20	100
	25 相数 Number of phasses	3				
	26 重量 Weight of motor	215				
	27 噪音 Typical noise level	≤45				

Red	√	DC+24V	Pin1
Black	√	DC-	Pin2

电机端子定义 Motor terminal definition

Red	√	DC+24V	Pin1
Black	√	DC-	Pin2



Connection: JST-PAP-06V-S ; V3

防护等级 Protection grade IP 54 A rpm mN.m W %

